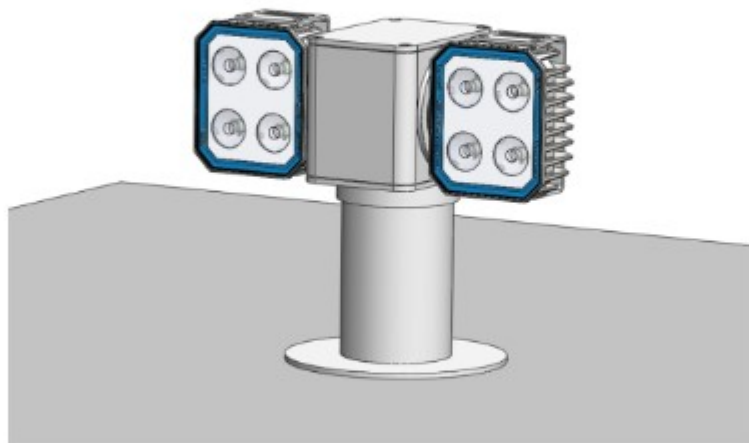


## SLH1 Product information update 2019

- 01** | A new product series in the Luminell range, SLH1 is fitted with 2 x SLX B light modules. A cabin controlled searchlight in a new way.
- 02** | Unlimited horizontal movement, no outdoor electrical installation. Optical performance in a compact format.
- 03** | Developed to meet the most demanding environments and situations.



<b>Light technology</b>	LED lighting technology with optimised beam width, SLX B spot 3.2 degrees, SLX B wide 15 degrees. Daylight colour temperature 6.300k CRI min 70
<b>Light power</b>	Single SLX B spot 3.2 degrees with 280 000 Cd, range >500 m with 1 lux
<b>Input power</b>	12-24 VDC, standard version 120W
<b>Compact size</b>	Outside dimension height 30 cm, width 36 cm, depth 16 cm (other heights will come as optional)
<b>Features</b>	<ul style="list-style-type: none"> <li>- Optical performance in a compact format</li> <li>- Unlimited horizontal movement</li> <li>- No outdoor electrical connections.</li> <li>- Thermal insulated design in order to reduce inside condensation.</li> <li>- Individual on/off for each light unit</li> </ul>
<b>Estimated Price</b>	RRP EXW - EUR 1500 excl VAT and any other taxes.
<b>Estimated launch date</b>	May 2019
<b>Estimated delivery date</b>	August 2019



/luminell



luminell-as